

ods

O'DWYER STEEL

Leading Supplier of Hot Rolled Steel
to off-site construction industry
throughout Ireland and the UK



Recognising the requirement for a specialist Hot Rolled Steel supplier to meet the growing demands of the LGS and Modular Offsite construction sectors.

Our Mission

Our Mission is to provide our customers with a comprehensive and high quality service throughout all our departments.

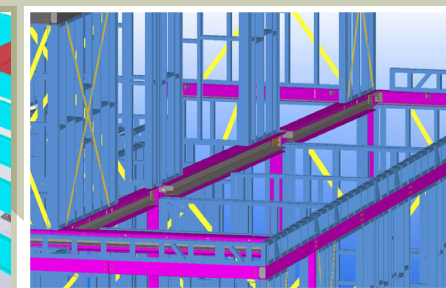
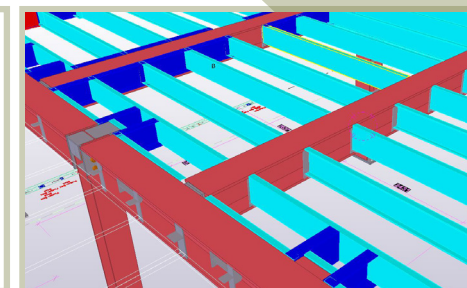
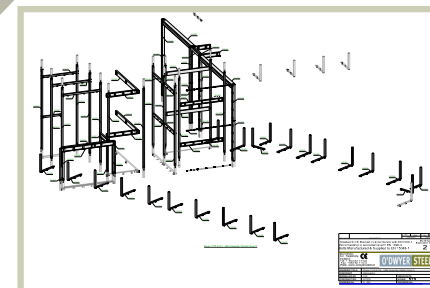
Our Vision

Our Vision is to be recognised in the Offsite Construction Industry as a leading HRS supplier with a reputation for service, quality and capability.

Over 60 years in business becoming one of the leading HRS suppliers in Ireland and the UK. O'Dwyer Steel has earned an outstanding reputation built on the strength of its long history, established reputation, experience gained and successful business relationships. Offering all of our customers competitive rates and flexible turnaround times. Enjoying continued growth supported by the company's willingness to diversify.

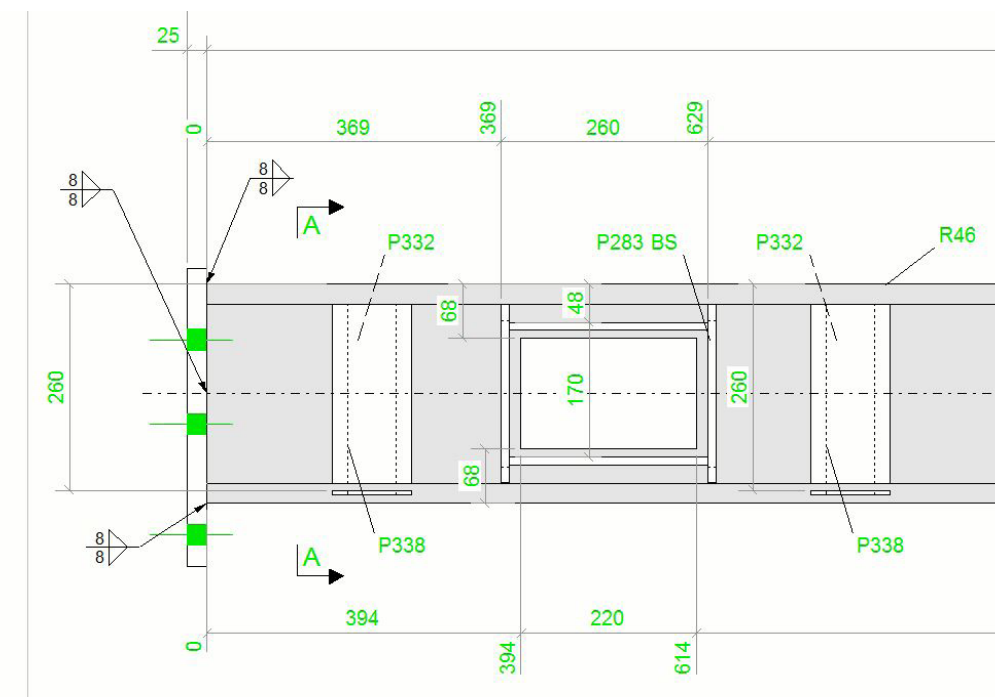
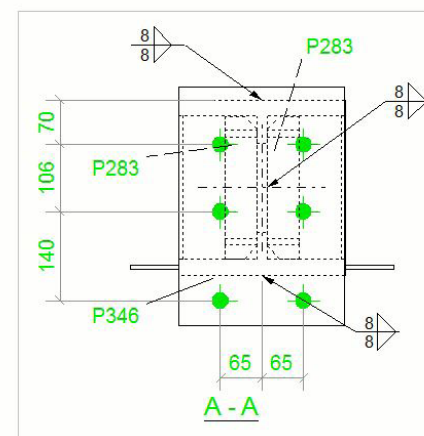


Working reliably and with integrity amongst ourselves and our client base. O'Dwyer Steel offer Hot Rolled steel detailing, manufacture and on time delivery to many of the UK's largest off site manufacturers.



Design Department

- Highly-experienced specialist detailing team, tailored specifically for integration with offsite LGS and modular construction.
- Versatile 3D modelling using TEKLA Structures software, producing precise and high quality fabrication drawings.
- Intelligent 3D Model Collaboration with customers through BIM technology including M&E contractors.
- Technical support provided from the early design phase through to project completion in line with customer requirements.

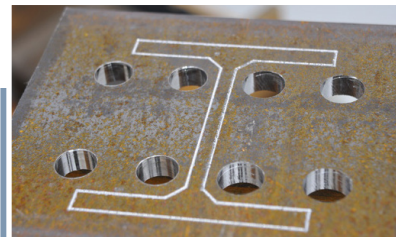


O'Dwyer steel have adapted successfully to address the demands of the off site industry by developing traditional structural steel processes to work seamlessly with light gauge steel solutions.

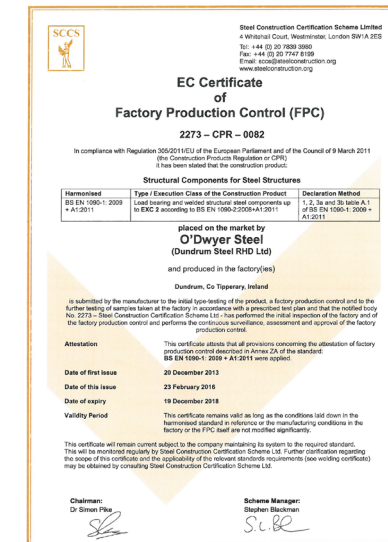


Fabrication Department

- Certified Factory Production Control (EN1090-1) & Welding Procedures (EN1090-2).
- Experienced fabrication workforce, fully trained to meet refined tolerances.
- Newly Commissioned Automated FICEP Endeavour CNC Saw & Drilling line.
- Automated 4 Turbine pre-fabrication Gietart shot-blaster to Swedish standard SA 25.
- Plasma Plate processing facility comprising of a FPB1800 Peddinghaus plate machine.
- Peddinghaus Anglemaster AFPS643 Angle processing machine.
- Large on-site HRS painting and storage facility.



Offering outstanding levels of service by focusing on our customer's needs. With O'Dwyer Steel, your Hot Rolled steel package is guaranteed to be on time and on budget!



Quality Department

- High Quality standards achieved through innovative quality engineering.
- Comprehensive Quality Control checks on all HRS elements prior to despatch.
- CE Marked to BS EN 1090 standards.
- ISO 9001 - Certified Management System.
- SCCS Certified.
- Fully Qualified CSWIP 3.0 Plus Visual Welding Inspector.



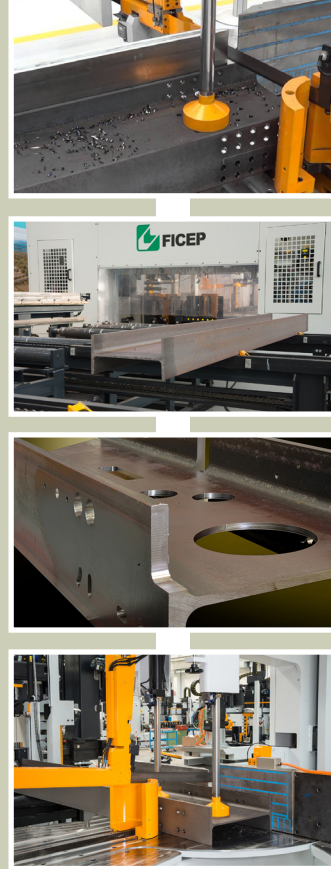
Hot Rolled Steel provided to over 100 successful off site construction projects throughout Ireland and the UK since 2014

We are pleased to announce our recent investment in the World's leading FICEP Endeavour CNC Saw & Drill Line.

Investment in this plant forms part of our development strategy which supports our continued growth as a key supplier to the off site construction industry.

Capital Investment

- Capital Investment Programme supported by Enterprise Ireland.
- CNC information imported directly for BIM technology.
- Advanced HRS milling operation for beam notching and M&E service openings.
- Comprehensive layout marking function taken directly from 3D BIM model.
- Faster drilling speeds, milling applications, slotting in all directions.
- Increased production efficiency and accuracy.



Sample Projects



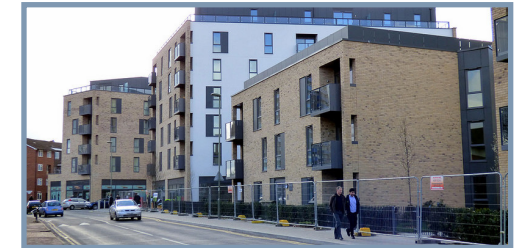
"This was an exciting new project for O'Dwyer Steel and demonstrated our ability to provide complex Hot Rolled steel elements to fix seamlessly with the LGS frame"

Addlestone One Development - Fusion Building Systems

O'Dwyer Steel were delighted to be appointed to provide the Hot-Rolled Steel detailing, manufacture and delivery for the superstructure of 6 Blocks of 4 to 7 storey residential apartments. This project formed part of the overall £90 million scheme to regenerate Addlestone Town Centre.

Matt Ryan Commercial Director at O'Dwyer Steel said "This was an exciting new project for O'Dwyer Steel and demonstrated our ability to provide complex Hot Rolled steel elements to fix seamlessly with the LGS frame."

*Location: Addlestone Town Centre, Surrey
Project Size: 210 tonnes*

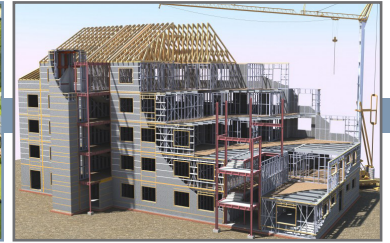


St Anne's Quarter Norwich – Vision Built

O'Dwyer's reputation for high quality was key in securing the Hot Rolled steel contract for the St Anne's project. These residential and commercial properties are part of the £70m regeneration of St. Anne's Quarter in the heart of Norwich. O'Dwyer Steel were provided with a pre-construction package from which a detailed set of fabrication drawings and site installation drawings were produced. Building Information Modelling was used throughout the design process. M&E service openings were incorporated through the HRS on all floors.

*Location: St Anne's Quarter, Norwich
Project Size: 260 tonnes*





Whatever the challenge, O'Dwyer Steel is able to provide a cost effective, practical solution. Driven by our goals and objectives, we blend our service to match your requirements

O'Dwyers Offsite Division

Commercial Director

Matt Ryan - mryan@odwyersteel.ie - +353 (87) 8138341

General Manager Offsite

Charles Walsh - cwalsh@odwyersteel.ie - +353 (85) 8152440

Senior Estimator

Adrian Crosse - acrosse@odwyersteel.ie - +353 (87) 4182913

Senior Offsite BIM Detailers

Vincent Flynn - VincentFlynn@odwyersteel.ie

Stanley Champ - StanleyChamp@odwyersteel.ie

Alex Manzya - AlexManzya@odwyersteel.ie

Quality Control Manager

Finbarr Ryan - finbarryan@odwyersteel.ie

Ireland Office

Main St. Dundrum Co. Tipperary, E34 YW77, Phone +353 (62) 71102

UK Office

Endeavour House, Coopers End Rd. Stanstead, Essex, CM24 1SJ

Phone +44 (0) 20 3432 5901

Website www.odwyersteel.ie / **Email** info@odwyersteel.ie



ods

O'DWYER STEEL